



Internacional de la Educación
América Latina
IEAL



RED
de Trabajadoras
de la Educación



WOMEN EDUCATION WORKERS' NETWORK

EDUCATION INTERNATIONAL LATIN AMERICA (EILA)





**Sub Región
Centroamérica
y República
Dominicana**

Guatemala	STEG
El Salvador	ANDES 21 DE JUNIO
Honduras	COLPROSUMALH COLPEDAGOGOSH COPRUMH SINDUNAH
Nicaragua	CGTEN - ANDEN
Costa Rica	ANDE SEC
República Dominicana	ADP FAPROUASD ANPROTED
Curaçao	SITEK
Panamá	MPU

**Sub Región
Zona Andina**

Colombia	FECODE ASPU
Venezuela	FEV FUM
Perú	SUTEP

**Sub Región
Cono Sur**

Brasil	CNTE PROIFES CONTEE
Chile	CPC SINDI2 FAUECH
Paraguay	UNE-SN OTEP-A
Uruguay	FUM-TEP FENAPES ATES
Argentina	CTERA CONADU CEA

33

ORGANIZATIONS

16

COUNTRIES

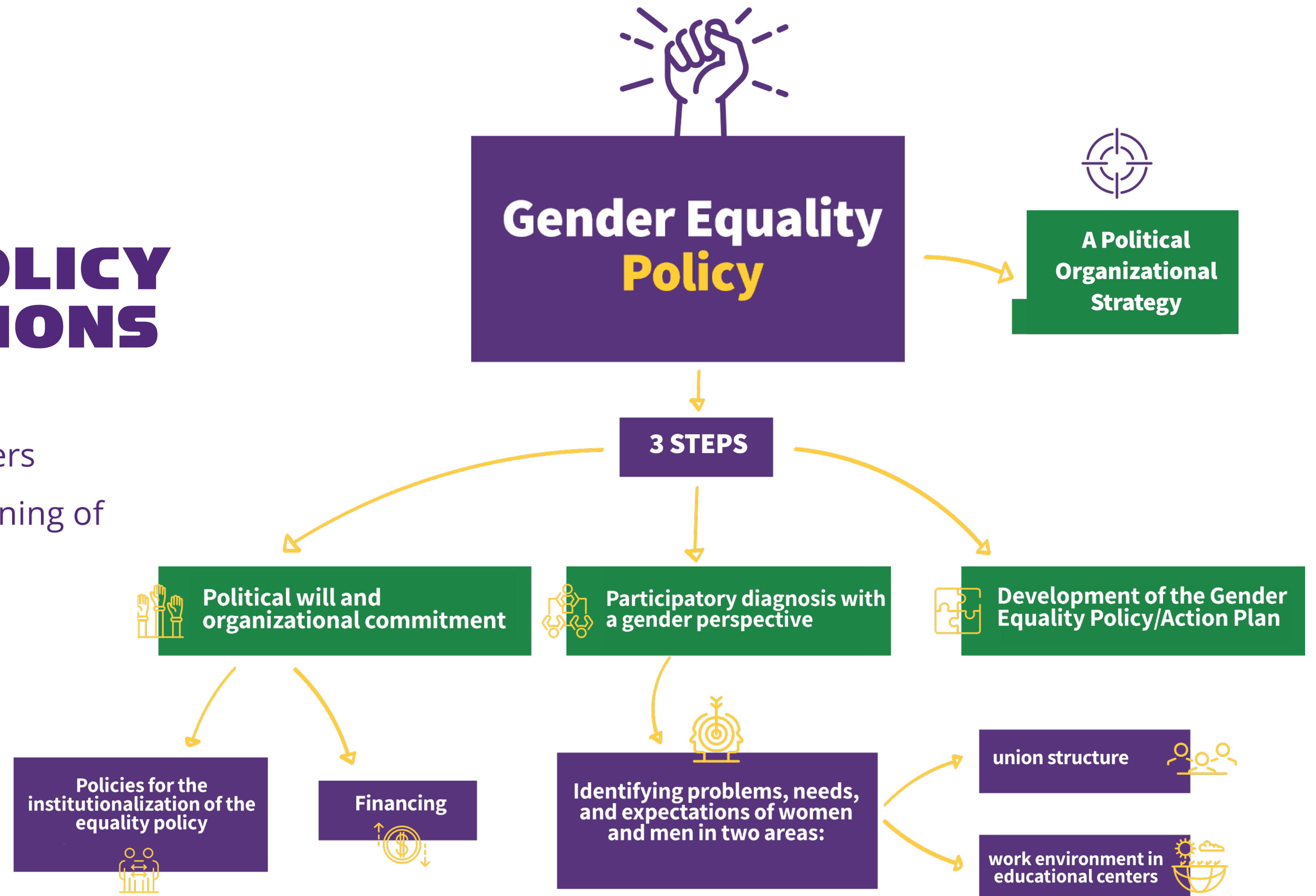
NETWORK'S PATH

Political and strategic
strengthening process of
trade unions



GENDER EQUALITY POLICY IN TRADE UNIONS

Why does the Education Workers
Network ensure the strengthening of
education trade unions?



REGIONAL, SUBREGIONAL, AND NATIONAL MEETINGS

How does the Women Education Workers' Network operate in our region?



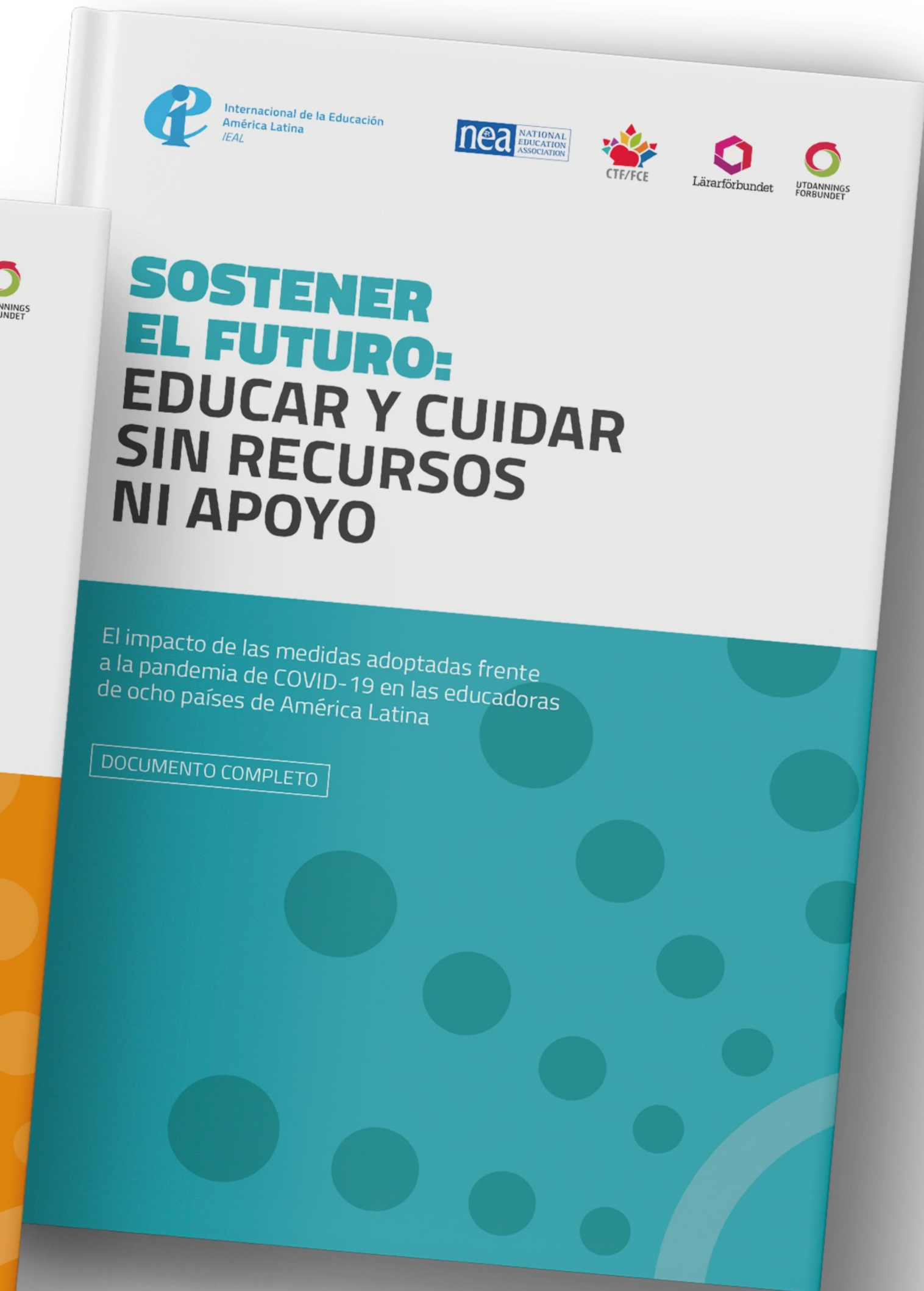
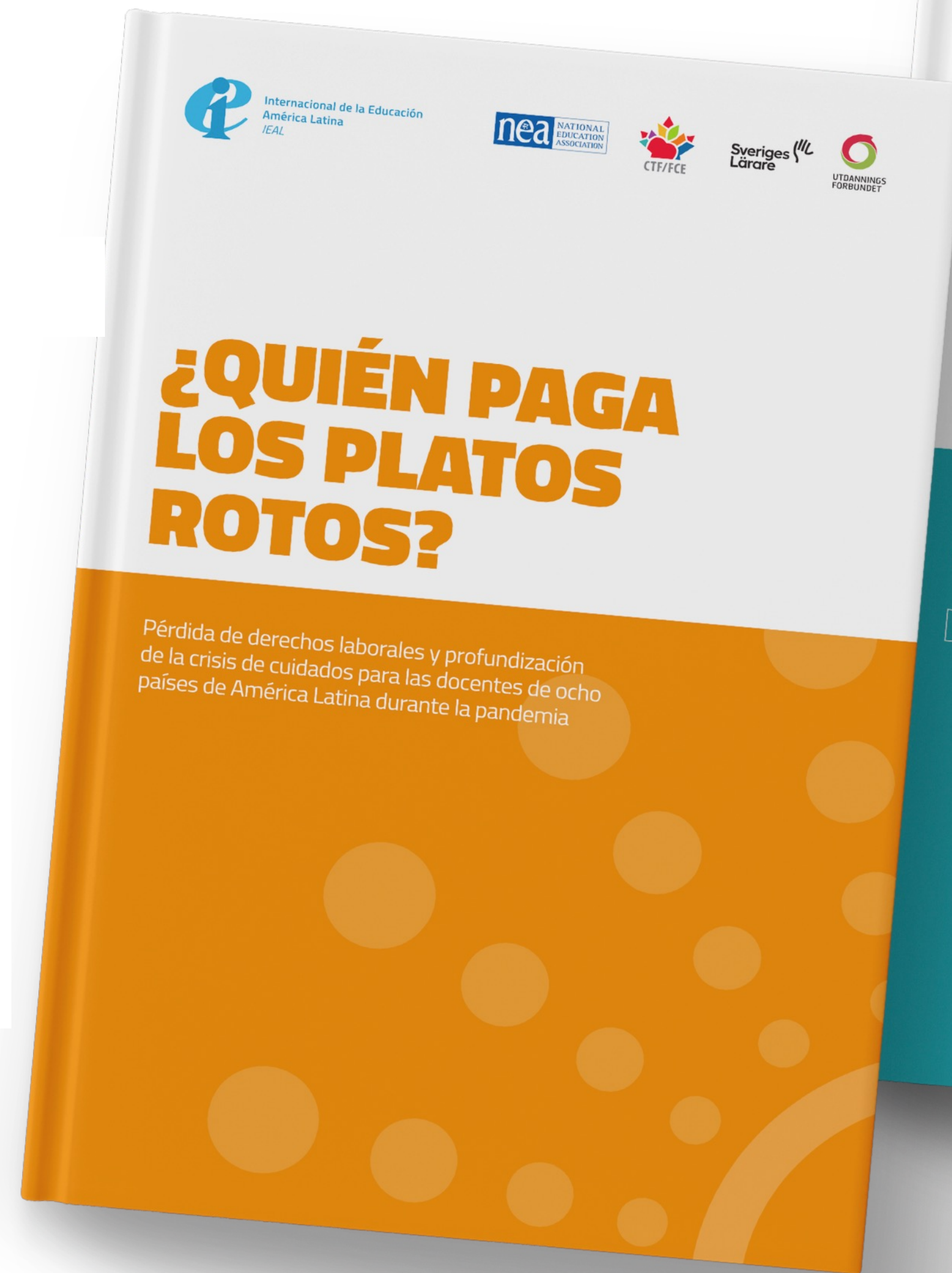


Internacional de la Educación
América Latina
IEAL



RED
de Trabajadoras
de la Educación

RE- SEARCH





CAMPAIGN FOR THE RATIFICATION OF ILO CONVENTION 190 AND RECOMMENDATION 206



CAMPAÑA DE LA
INTERNACIONAL DE LA EDUCACIÓN
AMÉRICA LATINA POR LA
**RATIFICACIÓN DEL
C190 DE LA OIT**



CAMPAÑA DE LA
INTERNACIONAL DE LA EDUCACIÓN
AMÉRICA LATINA POR LA
**RATIFICACIÓN DEL
C190 DE LA OIT**



CAMPAIGN FOR THE RATIFICATION OF ILO CONVENTION 190 AND RECOMMENDATION 206



CAMPAÑA DE LA INTERNACIONAL DE LA EDUCACIÓN AMÉRICA LATINA POR LA RATIFICACIÓN DEL C190 DE LA OIT





CAMPAIGN FOR THE RATIFICATION OF ILO CONVENTION 190 AND RECOMMENDATION 206



CAMPAÑA DE LA INTERNACIONAL DE LA EDUCACIÓN AMÉRICA LATINA POR LA RATIFICACIÓN DEL C190 DE LA OIT





CAMPAIGN FOR THE RATIFICATION OF ILO CONVENTION 190 AND RECOMMENDATION 206



CAMPAÑA DE LA
INTERNACIONAL DE LA EDUCACIÓN
AMÉRICA LATINA POR LA
**RATIFICACIÓN DEL
C190 DE LA OIT**

**MAFÉ
TULÀ**

FEAT

ANYUL AREVALO - TOCÁ EL TAMBÓ
GUADALUPE URBINA - MANU SAGGIORO - NAKURY
BERENICE - KUMARY SAWYERS - SHAROW GRANERA



#Y SOMOS TODAS





CAMPAIGN FOR THE RATIFICATION OF ILO CONVENTION 190 AND RECOMMENDATION 206



CAMPAÑA DE LA
INTERNACIONAL DE LA EDUCACIÓN
AMÉRICA LATINA POR LA
**RATIFICACIÓN DEL
C190 DE LA OIT**

C190 LATIN AMERICA AND THE CARIBBEAN

RATIFIED

México
El Salvador
Panamá
Ecuador
Perú
Uruguay
Argentina
Chile

IN PROGRESS

Brasil
Colombia

PENDING

Other countries



COMMUNICATION STRATEGY OF THE NETWORK



1

Raise awareness about issues affecting women teachers through the communication agenda of EILA and affiliated organizations, conducting communication and outreach campaigns.

2

Promote the EILA Campaign for the ratification of ILO Convention 190 through a communication campaign. 2023: Articles in media outlets, social media posts, among others.

3

Highlight the achievements and political profiles of women leaders in the region through a digital campaign on women's accomplishments: photo-stories and biographies.



OBSERVATORY OF GENDER EQUALITY

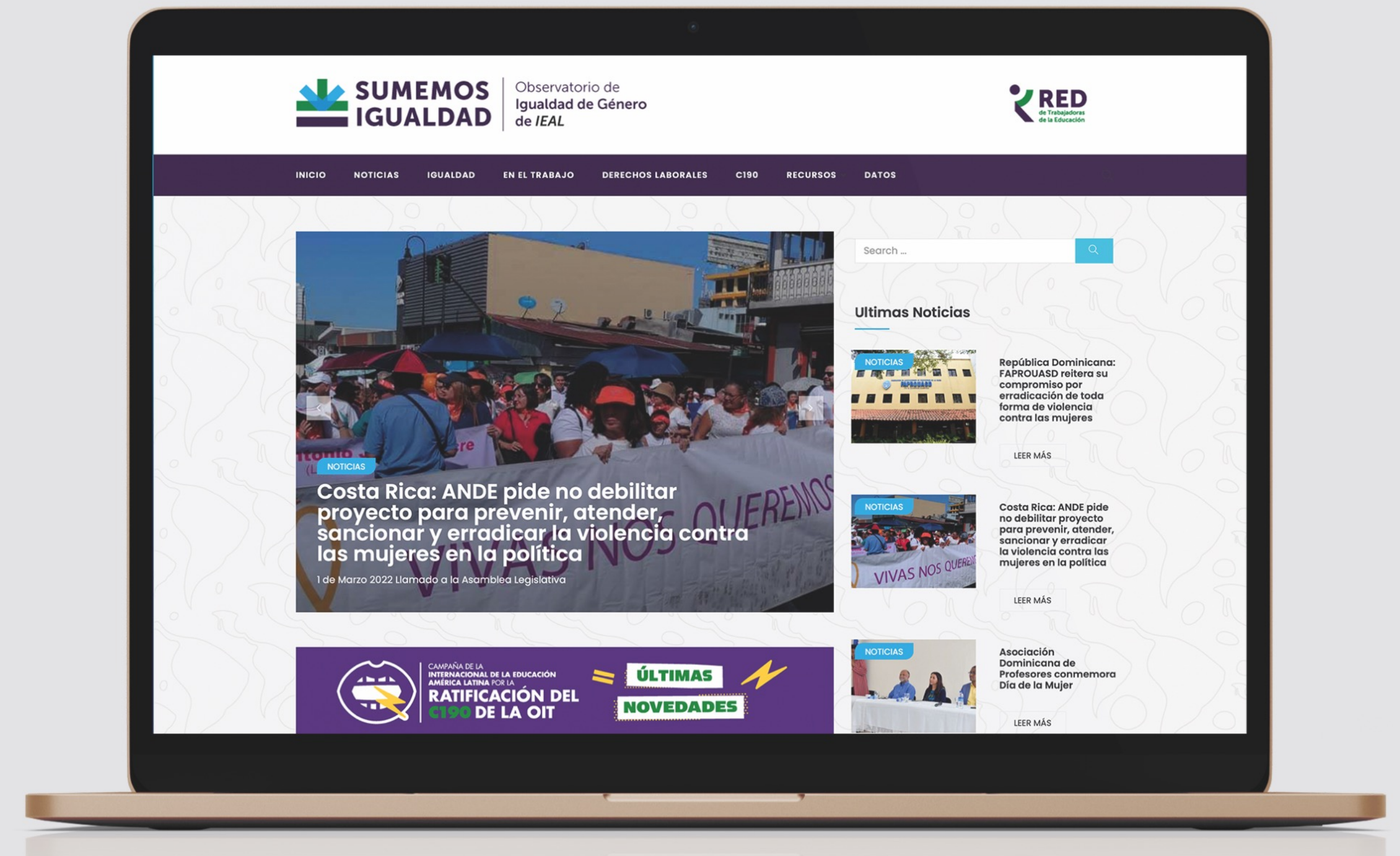
This observatory will have three pillars:

- Gender equality in the world of work
- Advancements and setbacks in labor rights and their impact on women's lives
- Women's rights in the workplace



SUMEMOS IGUALDAD

Observatorio de Igualdad de Género de IEAL



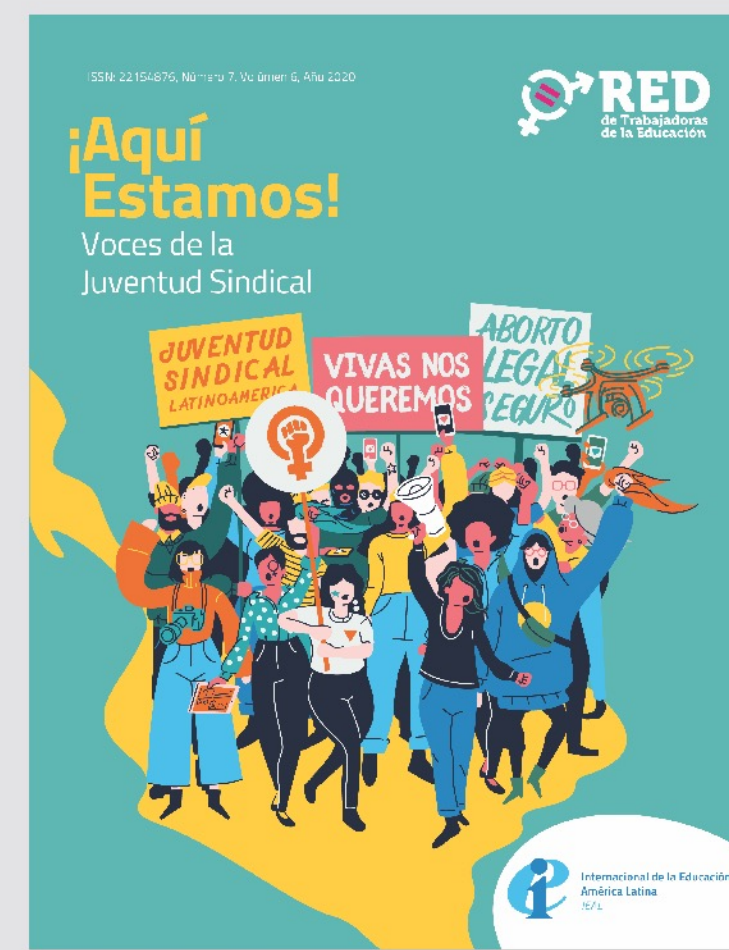


Internacional de la Educación
América Latina
IEAL



RED
de Trabajadoras
de la Educación

RED MAGAZINE



THANK YOU!



Internacional de la Educación
América Latina
IEAL



RED
de Trabajadoras
de la Educación